

E-Waste and Battery Recycling Resources Nationwide:

Best Buy Recycling

<https://www.bestbuy.com/site/services/recycling/pcmcat149900050025.c?id=pcmcat149900050025>

From televisions to memory cards, hard drives, batteries, and digital cameras—even cell phones and camera lenses—you can recycle up to 3 items per household per day. Click on the link above to see the specific limitations by state and e-waste category.

Call 2 Recycle

<https://www.call2recycle.org/>

Accepts all Nickel Cadmium (Ni-Cd), Nickel Metal Hydride (Ni-MH), Nickel Zinc (Ni-Zn), Lithium Ion (Li-ion), and Small Sealed Lead (Pb) batteries weighing up to 11 lbs each. There is a store locator option to drop off batteries in person. There is also an option to ship.

Battery Solutions

<https://batterysolutions.com/>

You can purchase battery recycling kits that are then shipped with pre-paid shipping labels for proper recycling.

Hefty EnergyBag Program

<https://www.hefty.com/products/hefty-energybag/>

The EnergyBag orange bags make it easy to collect otherwise hard to recycle plastics curbside. Items include bubble wrap, food storage bags, air pillow packs, plastic grocery bags, foam to go boxes, foam egg cartons, cereal box liners, butter tubs, plastic straws, plastic utensils, and so much else. Batteries and electronics are not allowed. Neither is food, liquid, or coffee grounds. You can currently buy the orange bags at local stores in Georgia, Nebraska, and Idaho.

Los Angeles Specific E-Waste and Battery Recycling Resources:

L.A. Sanitation Recycling and Mobile Collection Centers

<https://www.lacitysan.org/safecenters>

LA Sanitation has locations across Los Angeles County for residents to dispose of household hazardous waste and electronic waste.

Homeboy Electronics Recycling

<https://homeboyrecycling.com/>

Open Monday-Friday 10am-3pm at 6433 Canning St. in Commerce, CA

You can drop off items like TVs, phones, cables, wires, and more in person for free or you can request e-waste items to be picked up for a fee. There is also an option to request mail-in recycling kits.

Burbank Recycling Center

<https://cityofburbank.recyclist.co/what-to-do/brc/>

<https://www.burbankca.gov/web/public-works/recycle-center>

Open Monday-Friday 8am-5pm and Saturday 8am-4pm

Material-specific bins are provided and include items such as household electronics, batteries, fluorescent lights, and toner cartridges.

Battery Recycling at Studios in Los Angeles

Thanks to Local 695 for the contact information

Motion Picture Studios	Contact Name	Telephone Number
20th Century Fox	Mike King Collection Boxes located in Buildings 31 & 99	(310) 369-0453
CBS Studio Center	Bob Sheldon	(818) 655-5460
Culver Studios	Julian Betancourt	(310) 202-3273
Disney Studios	Chris Rubino	(818) 560-6221
Paramount Pictures	Bran Nelson	(323) 956-5896
Sony Studios	Carol Reynolds	(310) 244-8866
Universal Studios	Mark Danon	(818) 777-6955
Warner Bros.	Safety Department Environmental Initiatives	(818) 954-3908

Atlanta Specific E-Waste and Battery Recycling Resources:

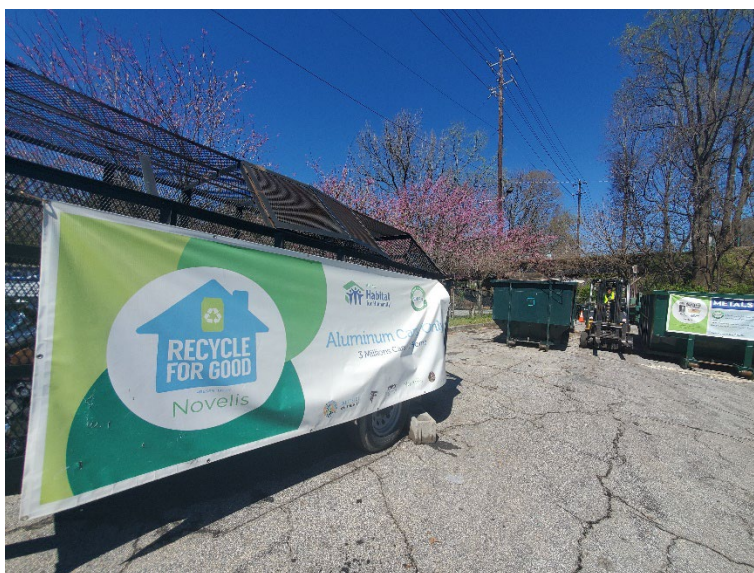


Photo Courtesy of Agnes Sebek, Central Region 2nd AC

CHaRM

<https://livethrive.org/charm/>

Open by Appointment Only in Atlanta, GA: Tuesdays and Thursdays 9am-2pm and Saturdays 8am-2pm

A convenient, one-stop recycling place. You can recycle electronics securely here, including phones and computers. This location also accepts clothes, wine corks, cooking oil, metals, Styrofoam, books, mattresses, and more!

NOTE: There is also a location in Athens (1005 College Ave, Athens, GA 30601). No appointment is necessary. *The hours are Tuesday and Wednesday 10am-7pm and Saturday 8am-12pm.* The Athens-Clarke County CHaRM is open to anyone, even if you do not reside in Athens. It is a one-stop drop for items that cannot be recycled at the curb or at the ACC recycling drop-off sites due to their chemical composition, hazardous components, size, shape, etc. These materials will be collected for reuse, recycling and, in rare cases, safe disposal. Check out more here: <https://www.accgov.com/5894/Hard-to-Recycle-Materials-CHaRM>

eWaste ePlanet

<https://www.ewasteplanet.com/>

Drop off-hours are Monday-Friday 8am-3pm in Doraville, GA right outside Atlanta

They accept unwanted electronics, regardless of quantity or quality, and use sustainable practices to dispose of them.

New York City Specific E-Waste and Battery Recycling Resources:

Special Waste Drop-Off Sites

<https://www1.nyc.gov/assets/dsny/site/services/harmful-products/special-waste-drop-offs>

New York City residents can drop off certain harmful products at these sites, which are *open from 10am to 5pm every Saturday and the last Friday of the month*. These locations include Staten Island, Queens, Manhattan, Brooklyn, and Bronx. Items you can bring include batteries, paint, electronics, fluorescent light bulbs, and motor oil.

SAFE Disposal Events

<https://www1.nyc.gov/assets/dsny/site/services/harmful-products/safe-disposal>

Solvents, Automotive, Flammables, and Electronics (SAFE) events are hosted throughout the year in all five boroughs. Registration is required. Click the link above to see the upcoming dates, what you can bring, and who is eligible.

Chicago Specific E-Waste and Battery Recycling Resources:

Winnetka Public Works Electronic Recycling

<https://www.villageofwinnetka.org/206/Recycling-Collection>

1390 Willow Rd, Winnetka, IL 60093

Open Thursdays from 1-3pm from April to November each year.

Household Chemicals & Computer Recycling Facility

https://www.chicago.gov/city/en/depts/cdph/provdrs/healthy_communities/svcs/household-chemicals---computer-recycling-facility-overview.html

Open Tuesdays 7am-12pm, Thursdays 2-7pm, and the first Saturday of every month 8am-3pm.

For a full list of locations throughout Chicago, check out this flyer:

<https://www.chicago.gov/content/dam/city/depts/cdph/InspectionandPermitting/E-Waste%20Collection%20Flyer.pdf>

General Resource for Managing Hazardous Waste:

California Department of Toxic Substances Control

<https://dtsc.ca.gov/managing-hazardous-waste/>

NYC Sanitation

<https://www1.nyc.gov/assets/dsny/site/services/harmful-products>

LA Sanitation SAFE Centers and Mobile Collection Events

https://lacitysan.org/san/faces/home/portal/s-lsh-wwd/s-lsh-wwd-s/s-lsh-wwd-s-c/s-lsh-wwd-s-c-hw/s-lsh-wwd-s-c-hw-safemc?_adf.ctrl-state=11am3qclxr_238